

Appendix 4: Suggested Pathways of Burn Care

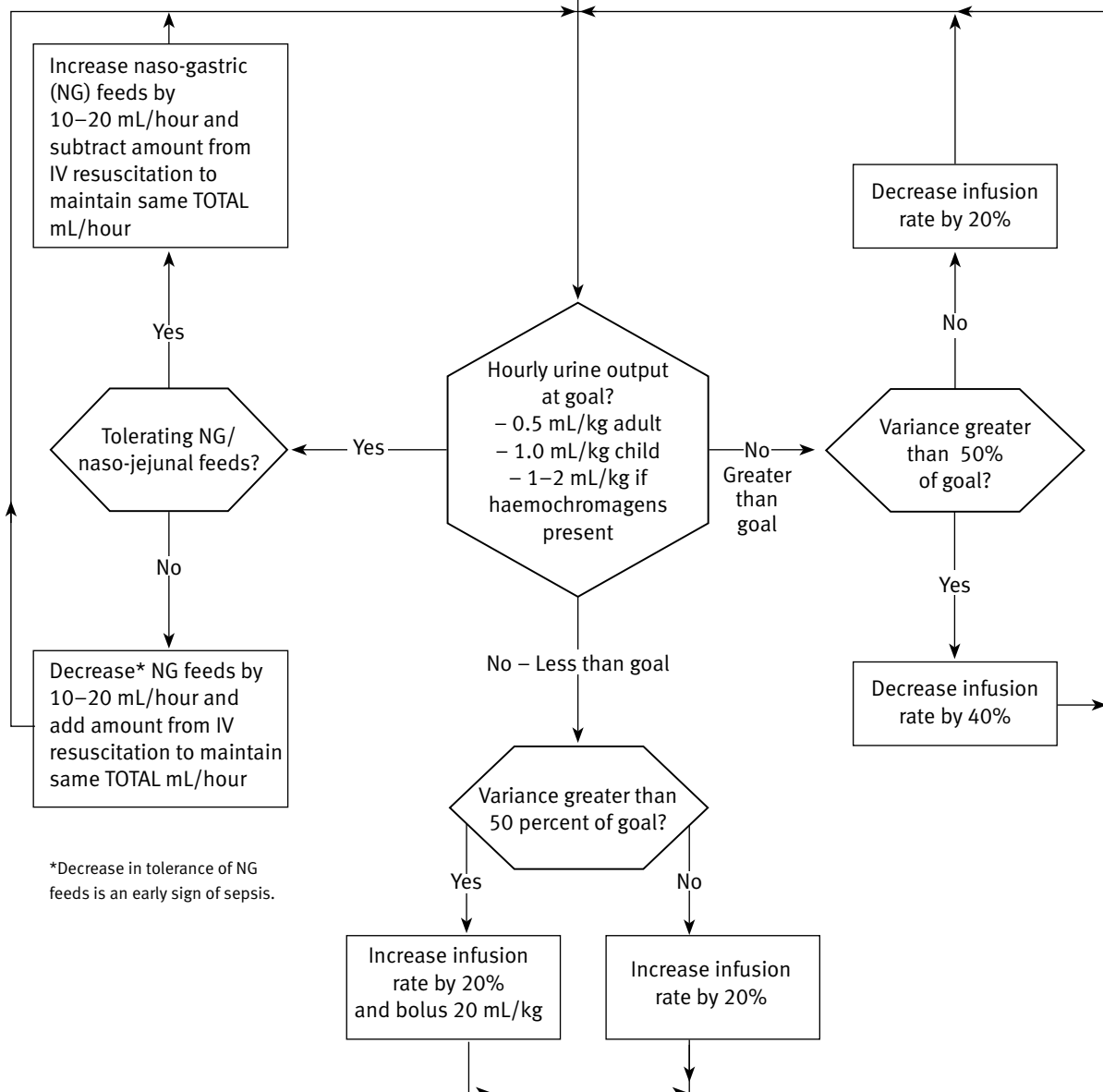
1) Fluid resuscitation pathway

AIM – minimal amount of fluid required to maintain adequate urine output

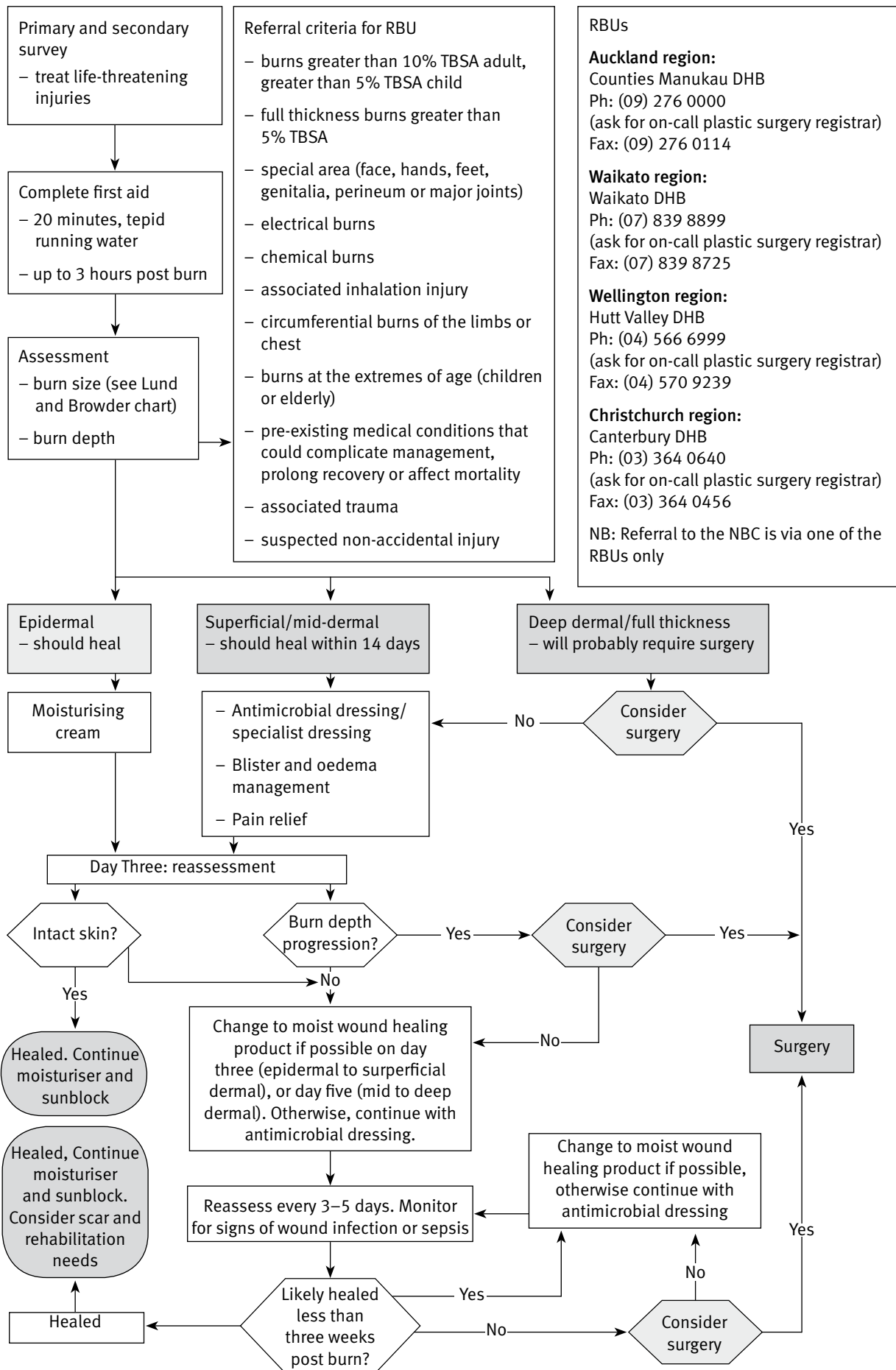
Fluid Resuscitation

- children with burn injury greater than 10% TBSA (exclude erythema) AND add maintenance
- adults with a burn injury greater than 15% TBSA (exclude erythema)
- any patient who cannot tolerate enteral resuscitation

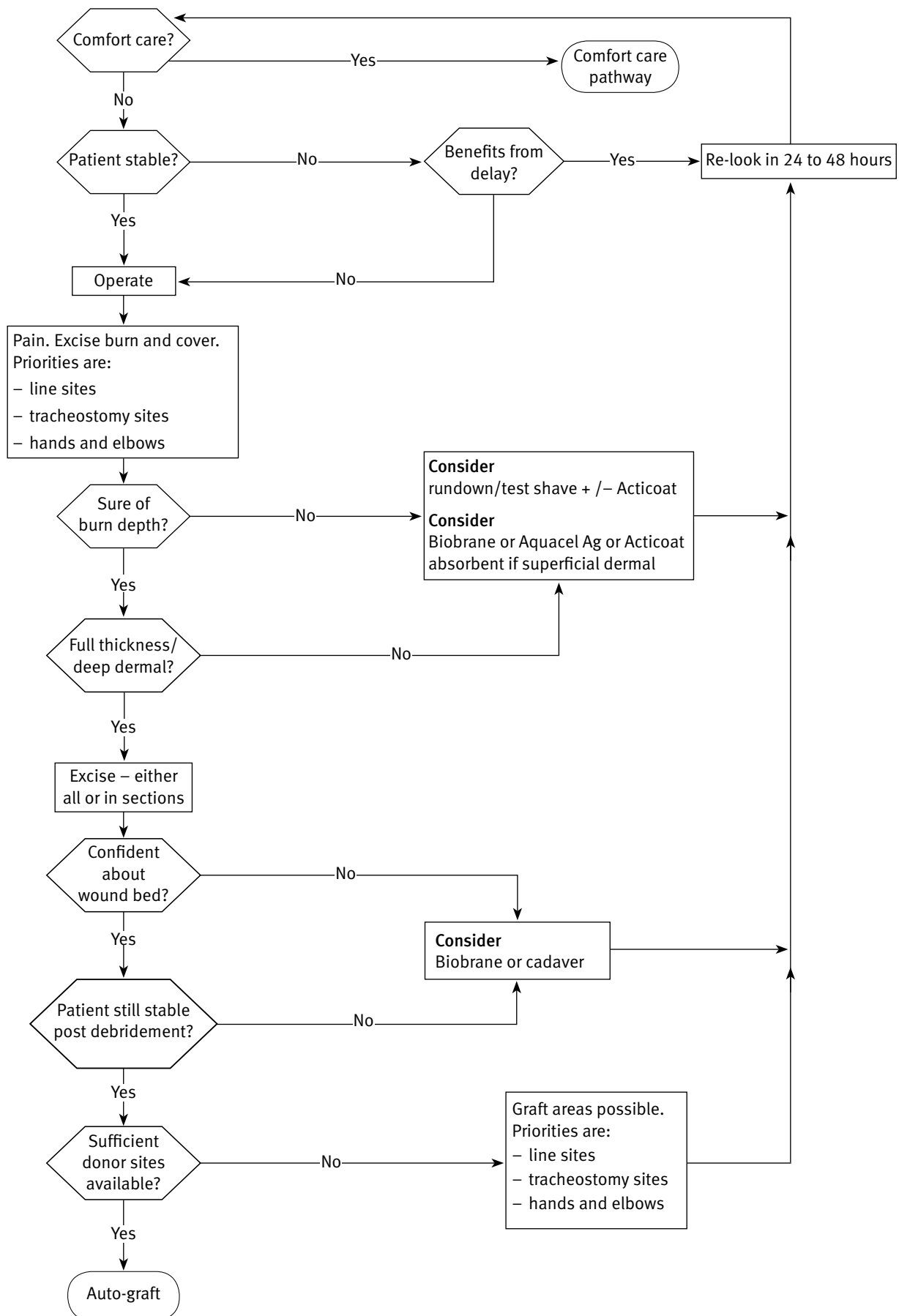
NB: Start enteral feeding and subtract this amount from intravenous (IV) resuscitation fluid



2) Burn wound management pathway



3) Surgical burn care pathway



4) Pathway for follow-up of patients discharged from National Burn Centre

