

# Appendix 4: Suggested Pathways of Burn Care

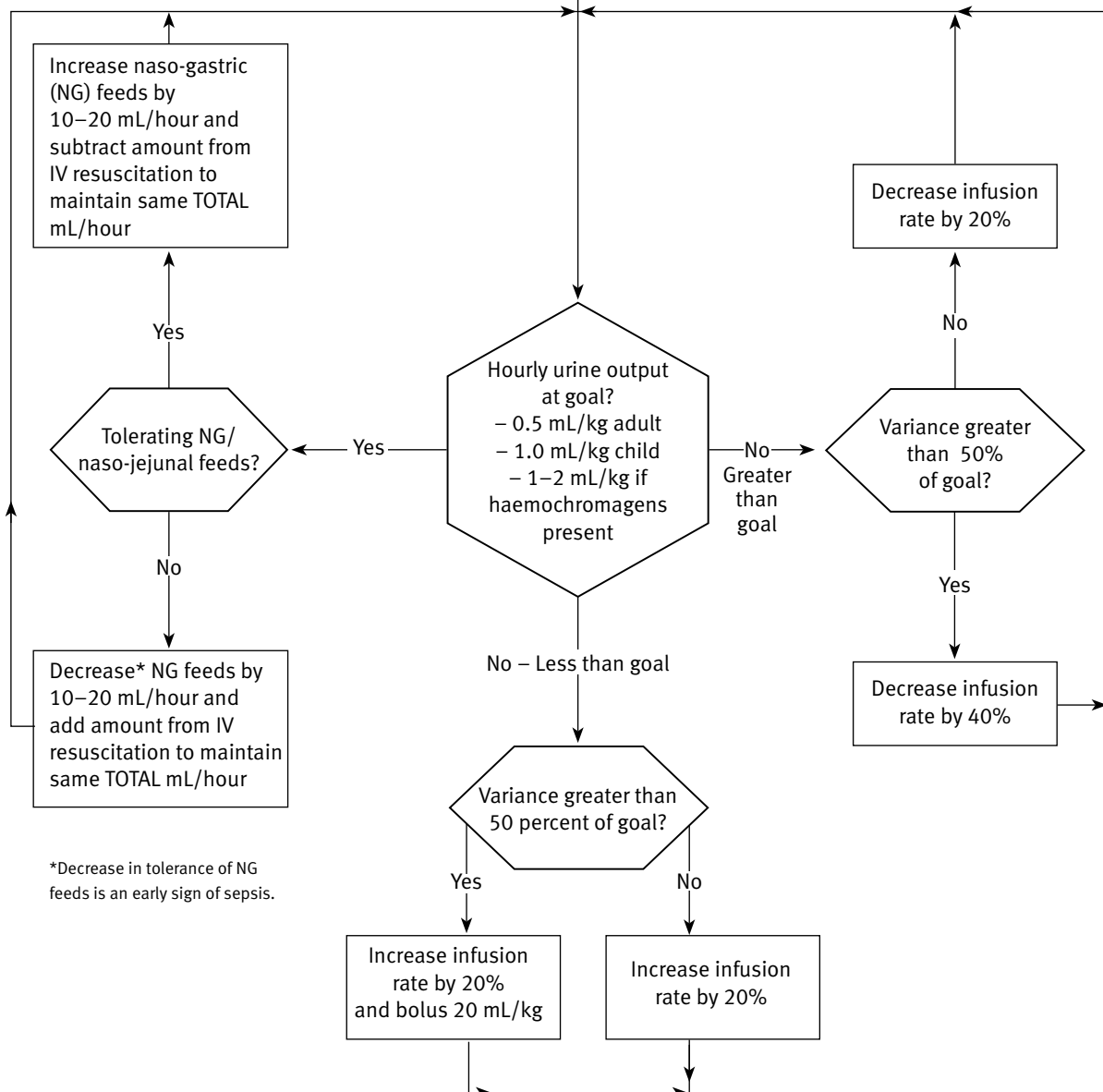
## 1) Fluid resuscitation pathway

AIM – minimal amount of fluid required to maintain adequate urine output

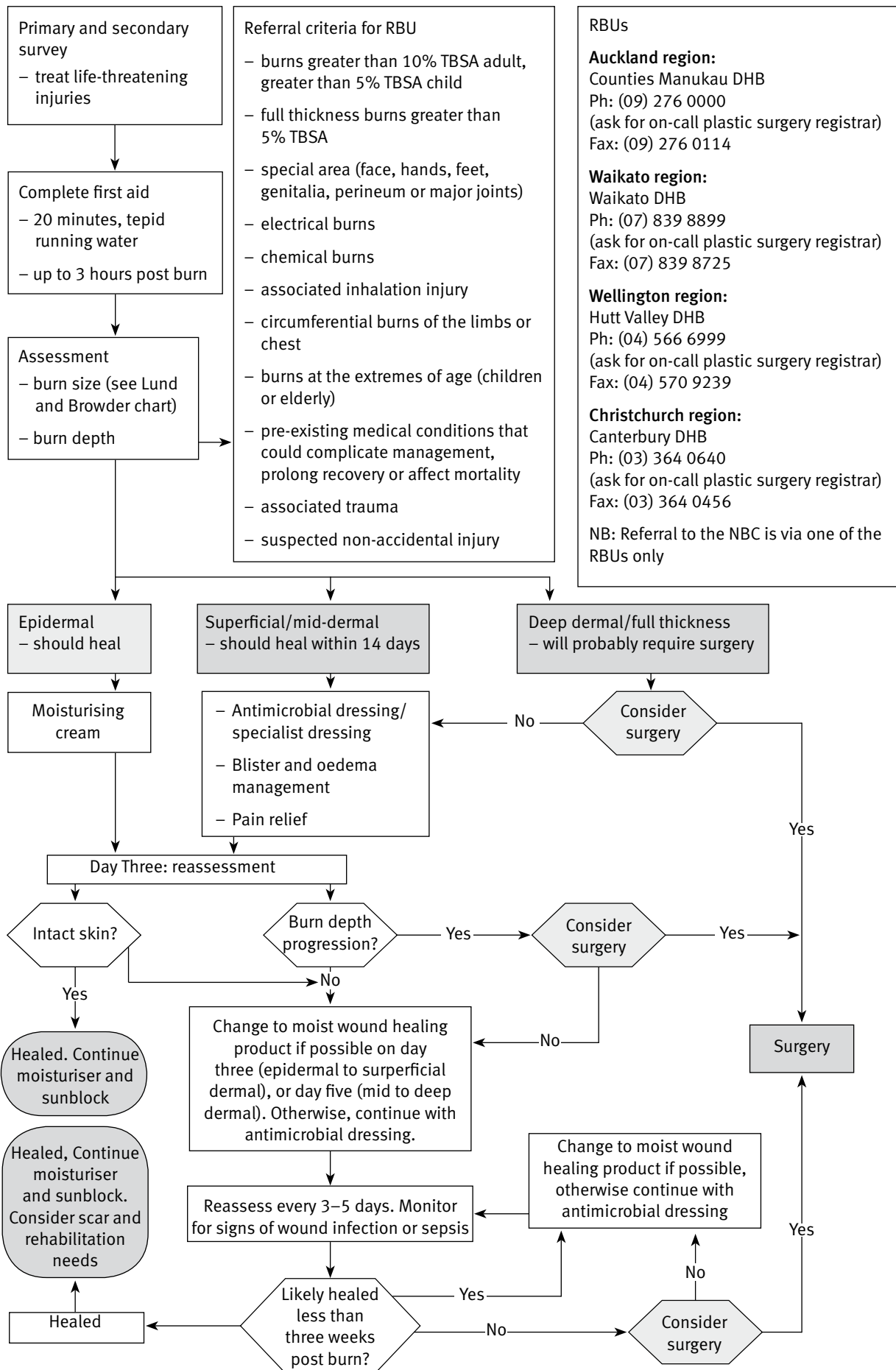
**Fluid Resuscitation**

- children with burn injury greater than 10% TBSA (exclude erythema) AND add maintenance
- adults with a burn injury greater than 15% TBSA (exclude erythema)
- any patient who cannot tolerate enteral resuscitation

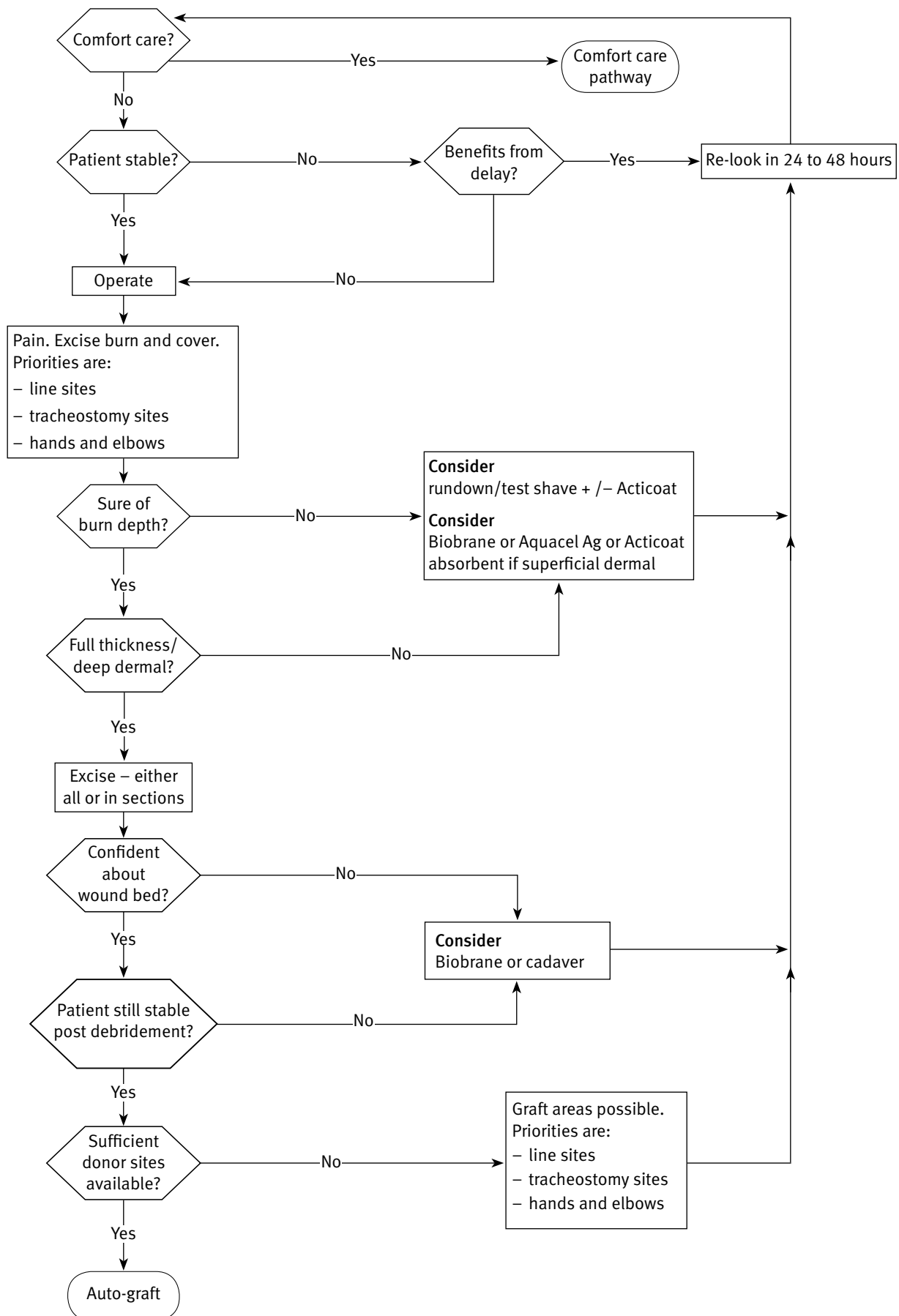
NB: Start enteral feeding and subtract this amount from intravenous (IV) resuscitation fluid



## 2) Burn wound management pathway



### 3) Surgical burn care pathway



#### 4) Pathway for follow-up of patients discharged from National Burn Centre

